

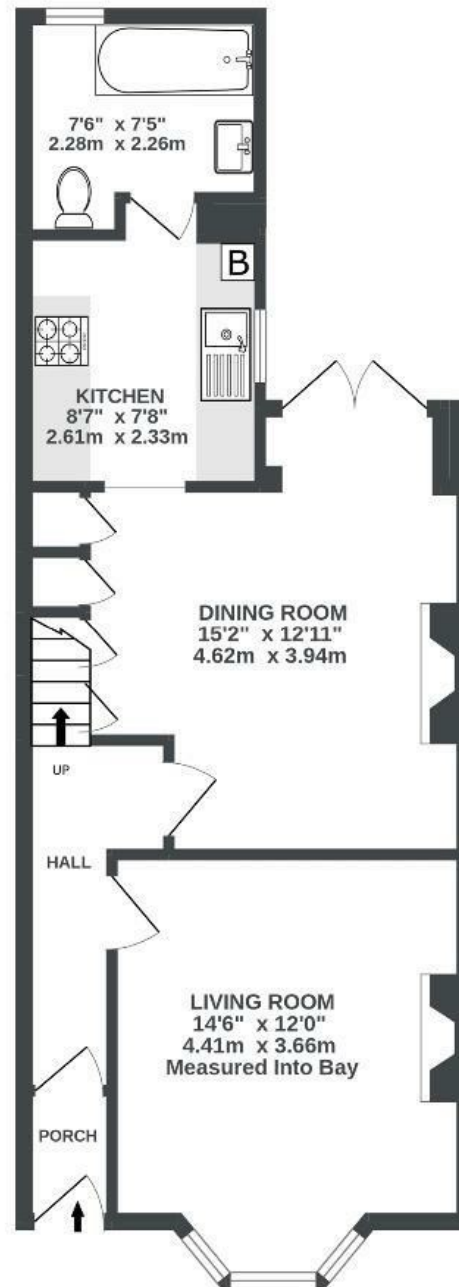
Belton Road

EASTON

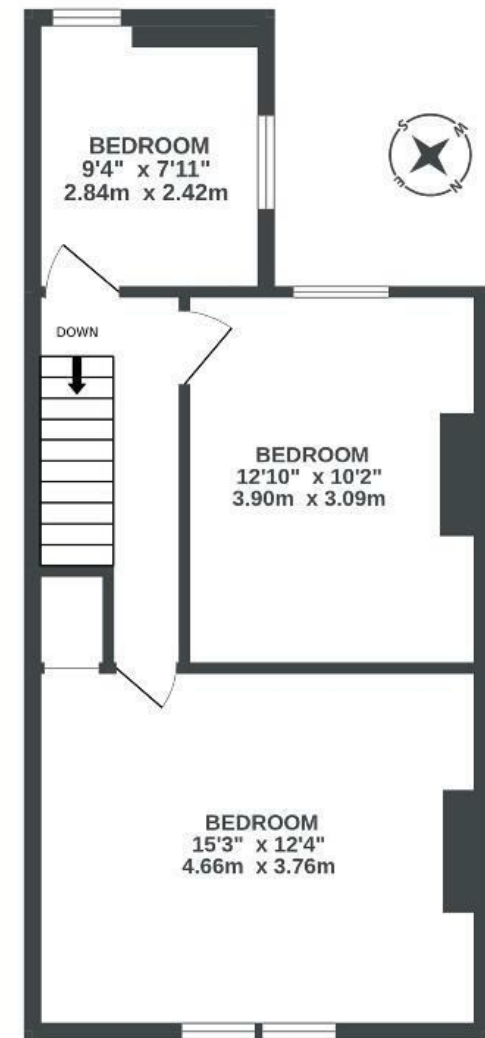
APPROXIMATE FLOOR AREA
89.2 SQM / 960 SQFT



GROUND FLOOR
515 sq.ft. (47.8 sq.m.) approx.



1ST FLOOR
446 sq.ft. (41.4 sq.m.) approx.



Illustrations are for reference purposes only, measurements are approximate, not to scale.

~~Boardwalk~~

Belton Road

EASTON, BRISTOL

£

£350,000

zzz

3 Bedrooms



Bristol, BS5

015



1 Bathrooms

"We have loved every minute of living on Belton Road. Centred at the heart of Easton, its best coffee shops, tap rooms and restaurants are in the most vibrant community in Bristol. The house is perfectly situated on a quiet road in a bustling town with contemporary features alongside classic Victorian style ready for you to make it your home."

"It'll be hard to leave but the fond memories of warming ourselves by the fire, eating rhubarb and berry crumble made fresh from the garden and sharing Christmas drinks with our neighbours will last long in our memory - as we are sure they will for you."

